

UTP CAT6 550 MHz Network Cable

ANSI/TIA/EIA 568 Category 6
ISO/IEC 11801
Part# **STL411**
Non-Plenum: (UL) CM, (UL) C

3411 Integrity Drive
Suite 200
Garner, NC 27529
866-882-8377
www.SunTechLabs.com

CABLE CONSTRUCTION:

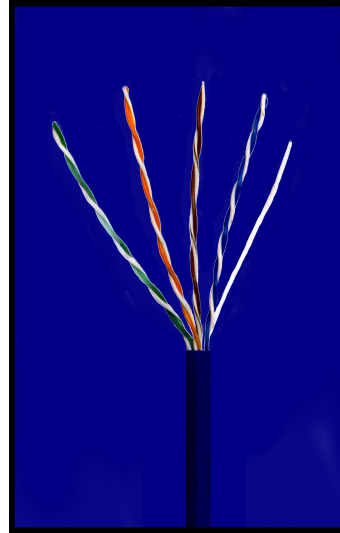
CENTER CONDUCTOR:
4 TWISTED PAIR
23 AWG SOLID COPPER
JACKET:
HIGH DENSITY POLYETHYLENE INSULATION
PVC OUTER
DIAMETER OVER JACKET: 0.252"
NOMINAL JACKET THICKNESS: 0.024"

MECHANICAL PROPERTIES:

OPERATING TEMP RANGE: -20 °C TO +60 °C

ELECTRICAL PROPERTIES:

IMPEDANCE (ohms) 1-250 MHz 100±15
IMPEDANCE (ohms) 250-550 MHz 100±20
PROPAGATION SPEED: 1.18 fpm



Freq (MHz)	NEXT (dB/100m)	ELFEXT (dB/100m)	PS NEXT (dB/100m)	PS ELFEXT (dB/100m)	Attenuation (dB/100m)	Rtn Loss (Min dB)	ACR Typ(dB)
1.0	74.3	67.8	72.3	64.8	1.9	20	79.3
4.0	65.3	55.8	63.3	57.7	3.7	23	68.6
8.0	60.3	49.7	58.8	46.7	5.3	25	62.6
10.0	59.3	47.8	57.3	44.8	5.9	25	60.5
16.0	56.3	43.7	54.3	40.7	7.5	25	55.9
20.0	54.8	41.8	52.8	38.7	8.4	25	53.6
25.0	53.4	39.8	51.4	36.8	9.5	24	51.2
31.25	51.9	37.9	49.9	34.9	10.6	24	48.6
62.5	47.4	31.9	45.4	28.8	15.4	22	39.6
100.0	44.3	27.8	42.3	24.8	19.8	21	32.3
155.0	41.5	23.9	39.5	20.9	25.1	21	24.4
200.0	39.8	21.8	37.8	18.7	29.0	21	19.1
250.0	38.3	19.8	36.3	16.8	32.8	18	14.0
350.0	36.2*	16.9	34.2	13.9	39.8*	16*	5.3
400.0	35.3*	15.4	33.7	12.7	43.0*	16*	1.5
550.0	33.2*	12.9	31.2	9.9	51.8*	15*	-8.85*

(*Indicates test value beyond standard specification)