

UTP CAT5E 350 MHz Network Cable

ANSI/TIA/EIA 568

ISO/IEC 11801

Part# **STL511**

Non-Plenum: (UL) CM, (UL) C

3411 Integrity Drive

Suite 200

Garner, NC 27529

866-882-8377

www.SunTechLabs.com

CABLE CONSTRUCTION:

CENTER CONDUCTOR:

4 TWISTED PAIR

24 AWG SOLID COPPER

JACKET:

HIGH DENSITY POLYETHYLENE INSULATION

PVC OUTER

DIAMETER OVER JACKET: 0.209"

NOMINAL JACKET THICKNESS: 0.022"

MECHANICAL PROPERTIES:

OPERATING TEMP RANGE: -20 °C TO +60 °C

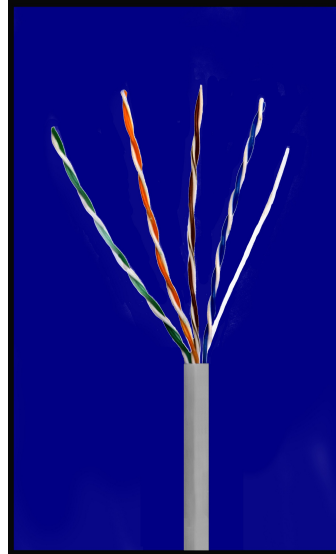
ELECTRICAL PROPERTIES:

IMPEDANCE (ohms) 1-115 MHz 100±15

IMPEDANCE (ohms) 155-200 MHz 100±18

IMPEDANCE (ohms) 200-350 MHz 100±22

PROPAGATION SPEED: 1.28 fpm



Freq (MHz)	NEXT (dB/100m)	ELFEXT (dB/100m)	PS NEXT (dB/100m)	PS ELFEXT (dB/100m)	Attenuation (dB/100m)	Rtn Loss (Min dB)	ACR Typ(dB)
0.772	67.0	66.0	64.0	63.0	1.8	19	69.0
1.0	65.3	63.8	62.3	60.8	2.0	20	68.3
4.0	56.3	51.7	53.3	48.7	4.1	23	57.3
8.0	51.8	45.7	48.8	42.7	5.8	25	51.2
10.0	50.3	43.8	47.3	40.8	6.5	25	49.1
16.0	47.3	39.7	44.2	36.7	8.2	25	44.3
20.0	48.5	37.7	42.8	34.7	9.3	25	41.9
25.0	44.3	35.8	41.3	32.8	10.4	24	39.3
31.25	42.9	33.9	39.9	30.9	11.6	24	36.6
62.5	38.4	27.8	35.4	24.8	17.0	22	27.1
100.0	35.3	23.8	32.3	20.8	22.0	20	19.3
155.0	33.0*	20.0	29.0	17.0	28.1*	19*	10.7
200.0	31.0*	18.0	28.0	15.0	32.4*	19*	4.9
310.0	28.0*	14.0	25.0	11.0	41.8*	18*	-6.9
350.0	27.0*	13.0	24.0	10.0	44.9*	17*	-10.4

(*Indicates test value beyond standard specification)

Specifications subject to change

Revised: 04/16/08

Sun Tech Labs